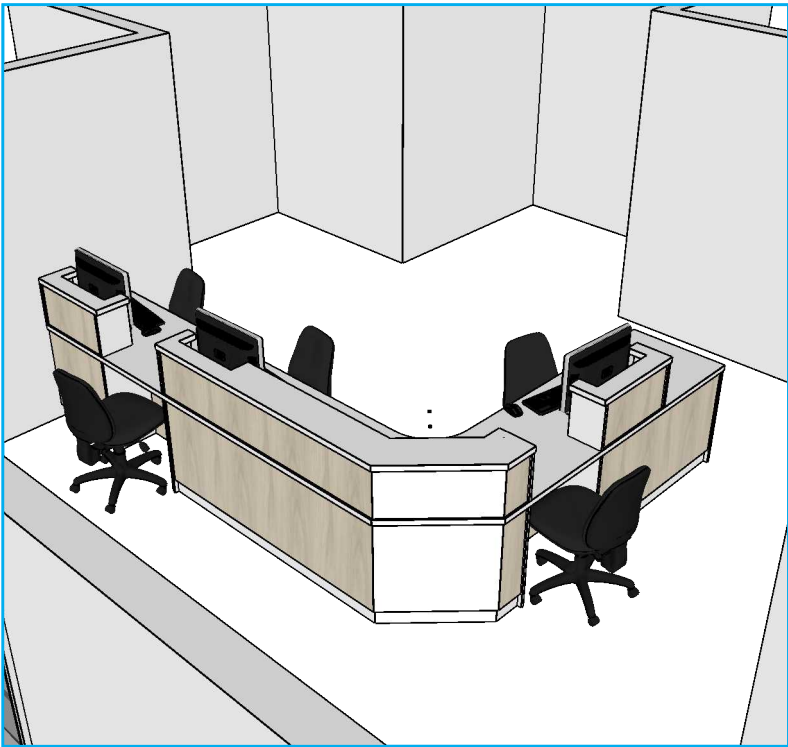


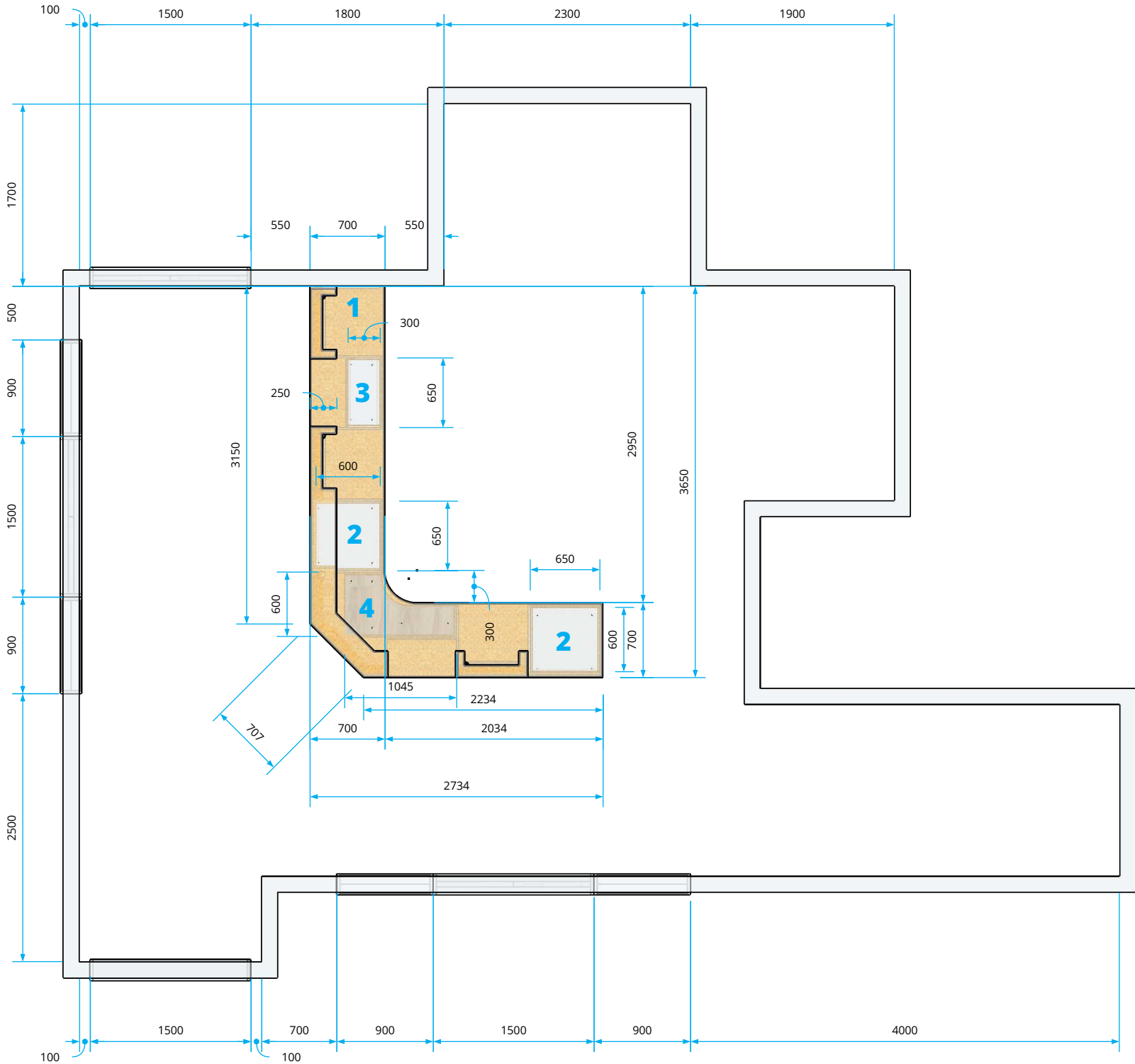
Component list & specification						Revision issue history		
Drawing reference:	Part number:	Description	Qty.	Colour requirements:	Notes:	Drawing issue:	Date:	Description of changes:
1	STAFFBASE	Solid surface worktops with laminate fascias - 3650W x 2734W x 700D 750H worktop 1100H top box	1	Worktop: Group A solid surface 'White' Fascias: White Cape Elm Egger® H3760 with matching edging		1	26-05-20	Drawing issued
2	BU650600713-3D	Base unit - 650W x 600D x 713H - 18mm MFC construction - Fitted with 3 no. drawers	2	Carcass: White Egger® W980 with Hranipex® HU10980 White Pearl edging Fascias: White Cape Elm Egger® H3760 with matching edging	1 no. large drawer 2 no. small drawers	2	08-07-21	Corrected no. 3 unit depth (was 250, actually 300) Added wall and BU drawing page
3	BU650300713-SD	Base unit - 650W x 300D x 713H - 18mm MFC construction - Fitted with solid split doors	1	Carcass: White Egger® W980 with Hranipex® HU10980 White Pearl edging Fascias: White Cape Elm Egger® H3760 with matching edging		3	13-07-21	Added 100mm support wall
4	BU1145600713-CORNER	Corner base unit - 1145W x 600D x 713H - 18mm MFC construction - Open fronted	1	White Cape Elm Egger® H3760 with matching edging	1no. fixed shelf			
Room to be cleared prior to installation. Cabinets to be fitted on adjustable feet and a continuous plinth is to be scribed to fit on site. End panels to be supplied in oversized and cut to suit on site.								



3D view 1



3D view 2

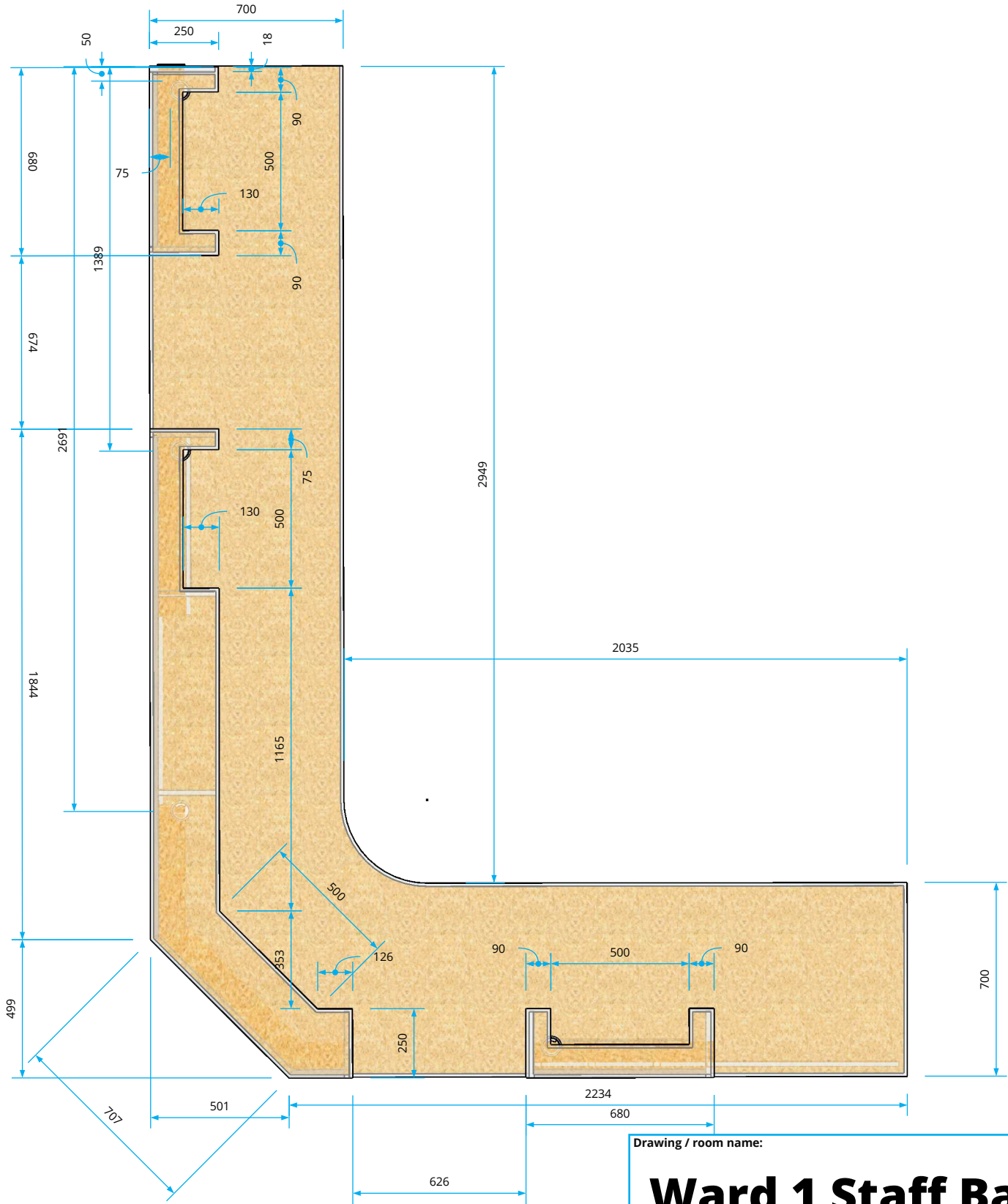



Plan (1:50)

Drawing approval	
Architect sign off:	
Customer sign off:	

Drawing / room name:		Drawing no:	Issue / version no:	Date:
Ward 1 Staff Base		MS06309	3	13-07-21
Medspace Solutions Ltd. Unit 38, Hither Green Industrial Estate, Clevedon, BS21 6XU 01275 394959 sales@medspacesolutions.co.uk		Drawing author: Steve Caira steve.caira@medspacesolutions.co.uk	Contact:	
Checked by: NOT CHECKED		Scale: 1:20 / 1:50 @ A3	Sheet no: 1 of 8	

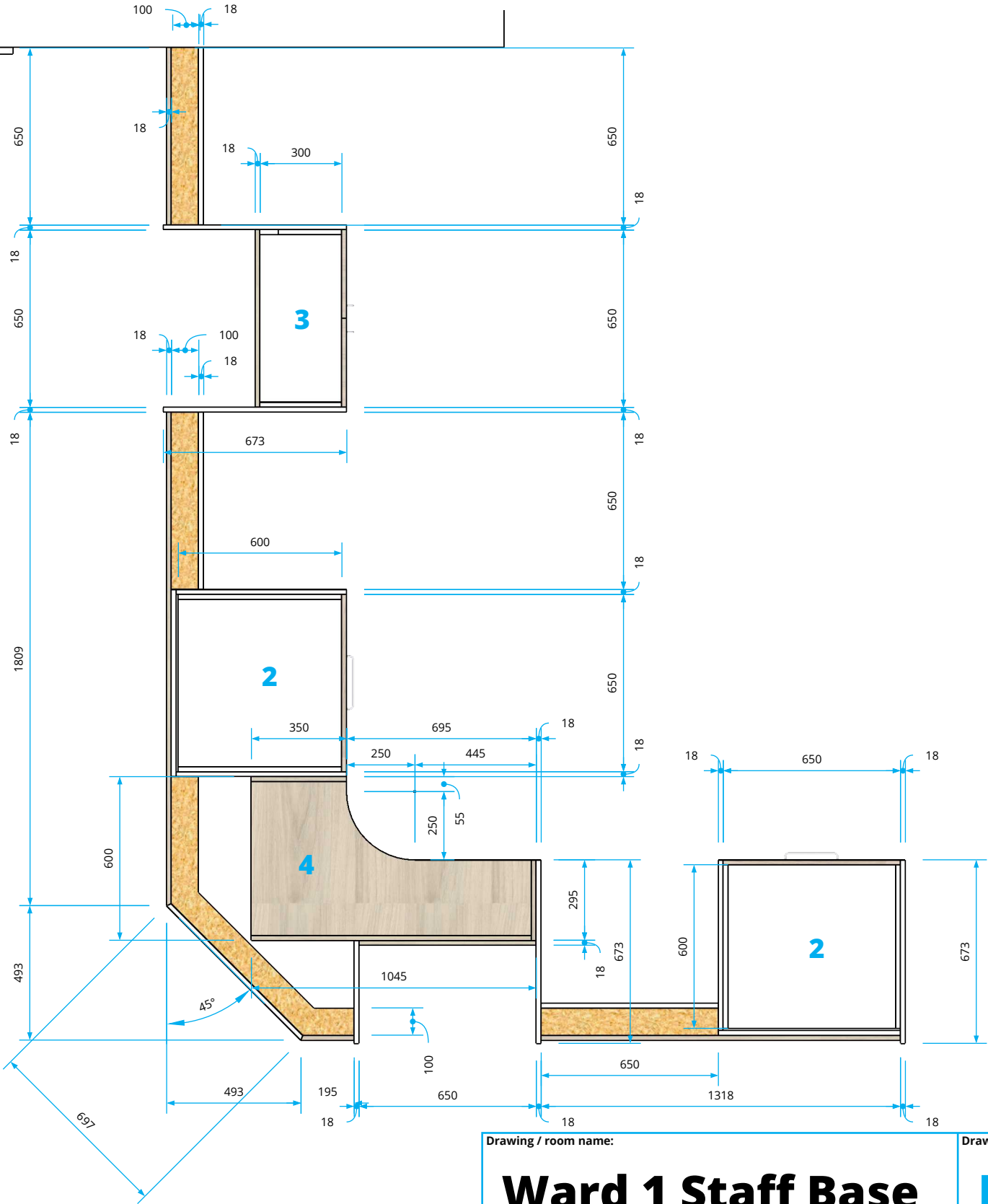
Component list & specification						Revision issue history		
Drawing reference:	Part number:	Description	Qty.	Colour requirements:	Notes:	Drawing issue:	Date:	Description of changes:
1	STAFFBASE	Solid surface worktops with laminate fascias - 3650W x 2734W x 700D 750H worktop 1100H top box	1	Worktop: Group A solid surface 'White' Fascias: White Cape Elm Egger® H3760 with matching edging		1	26-05-20	Drawing issued
2	BU650600713-3D	Base unit - 650W x 600D x 713H - 18mm MFC construction - Fitted with 3 no. drawers	2	Carcass: White Egger® W980 with Hranipex® HU10980 White Pearl edging Fascias: White Cape Elm Egger® H3760 with matching edging	1 no. large drawer 2 no. small drawers	2	08-07-21	Corrected no. 3 unit depth (was 250, actually 300) Added wall and BU drawing page
3	BU650300713-SD	Base unit - 650W x 300D x 713H - 18mm MFC construction - Fitted with solid split doors	1	Carcass: White Egger® W980 with Hranipex® HU10980 White Pearl edging Fascias: White Cape Elm Egger® H3760 with matching edging		3	13-07-21	Added 100mm support wall
4	BU1145600713-CORNER	Corner base unit - 1145W x 600D x 713H - 18mm MFC construction - Open fronted	1	White Cape Elm Egger® H3760 with matching edging	1no. fixed shelf			
Room to be cleared prior to installation. Cabinets to be fitted on adjustable feet and a continuous plinth is to be scribed to fit on site. End panels to be supplied in oversized and cut to suit on site.								



Drawing / room name:		Drawing no:	Issue / version no:	Date:	
Ward 1 Staff Base		MS06309	3	13-07-21	
 <div>Medspace Solutions Ltd. Unit 38, Hither Green Industrial Estate, Clevedon, BS21 6XU 01275 394959 sales@medspacesolutions.co.uk</div>		Drawing author: Steve Caira steve.caira@medspacesolutions.co.uk		Contact:	
		Checked by: NOT CHECKED		Scale: 1:20 / 1:50 @ A3	Sheet no: 2 of 8

Component list & specification					
Drawing reference:	Part number:	Description	Qty.	Colour requirements:	Notes:
1	STAFFBASE	Solid surface worktops with laminate fascias - 3650W x 2734W x 700D 750H worktop 1100H top box	1	Worktop: Group A solid surface 'White' Fascias: White Cape Elm Egger® H3760 with matching edging	
2	BU650600713-3D	Base unit - 650W x 600D x 713H - 18mm MFC construction - Fitted with 3 no. drawers	2	Carcass: White Egger® W980 with Hranipex® HU10980 White Pearl edging Fascias: White Cape Elm Egger® H3760 with matching edging	1 no. large drawer 2 no. small drawers
3	BU650300713-SD	Base unit - 650W x 300D x 713H - 18mm MFC construction - Fitted with solid split doors	1	Carcass: White Egger® W980 with Hranipex® HU10980 White Pearl edging Fascias: White Cape Elm Egger® H3760 with matching edging	
4	BU1145600713-CORNER	Corner base unit - 1145W x 600D x 713H - 18mm MFC construction - Open fronted	1	White Cape Elm Egger® H3760 with matching edging	1no. fixed shelf
Room to be cleared prior to installation. Cabinets to be fitted on adjustable feet and a continuous plinth is to be scribed to fit on site. End panels to be supplied in oversized and cut to suit on site.					

Revision issue history		
Drawing issue:	Date:	Description of changes:
1	26-05-20	Drawing issued
2	08-07-21	Corrected no. 3 unit depth (was 250, actually 300) Added wall and BU drawing page
3	13-07-21	Added 100mm support wall

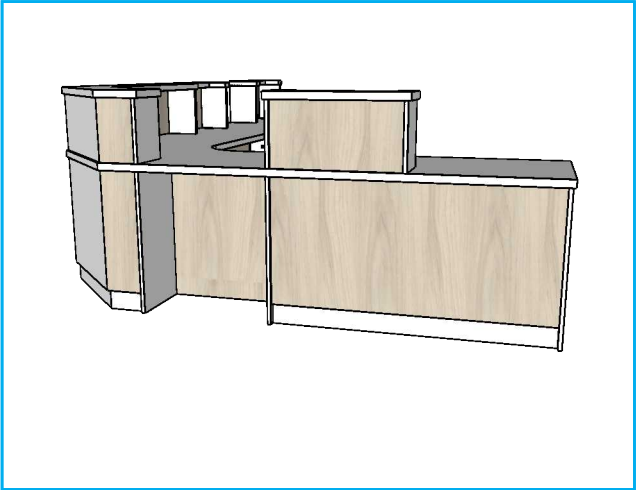
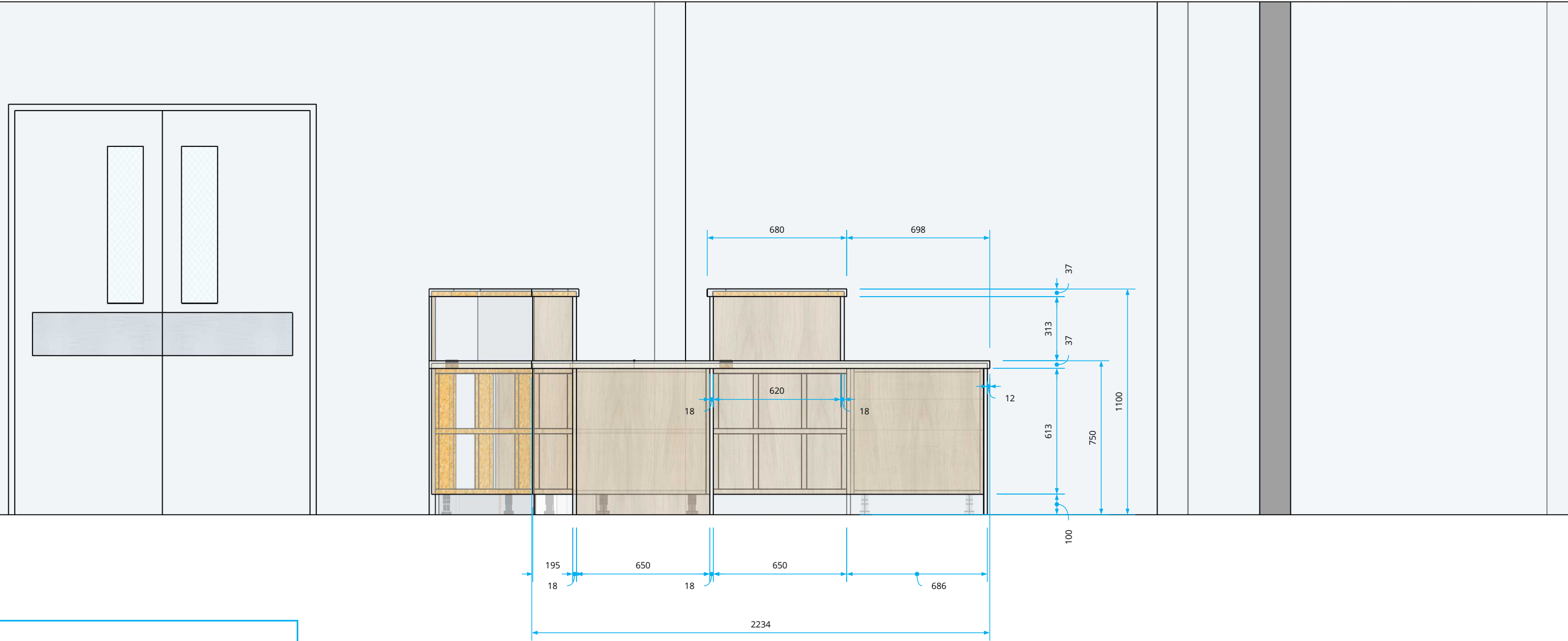



Drawing / room name:		Drawing no:	Issue / version no:	Date:
Ward 1 Staff Base		MS06309	3	13-07-21
Medspace Solutions Ltd. Unit 38, Hither Green Industrial Estate, Clevedon, BS21 6XU 01275 394959 sales@medspacesolutions.co.uk		Drawing author: Steve Caira steve.caira@medspacesolutions.co.uk	Contact:	
Checked by: NOT CHECKED		Scale: 1:20 / 1:50 @ A3	Sheet no: 3 of 8	

Component list & specification					
Drawing reference:	Part number:	Description	Qty.	Colour requirements:	Notes:
1	STAFFBASE	Solid surface worktops with laminate fascias - 3650W x 2734W x 700D 750H worktop 1100H top box	1	Worktop: Group A solid surface 'White' Fascias: White Cape Elm Egger® H3760 with matching edging	
2	BU650600713-3D	Base unit - 650W x 600D x 713H - 18mm MFC construction - Fitted with 3 no. drawers	2	Carcass: White Egger® W980 with Hranipex® HU10980 White Pearl edging Fascias: White Cape Elm Egger® H3760 with matching edging	1 no. large drawer 2 no. small drawers
3	BU650300713-SD	Base unit - 650W x 300D x 713H - 18mm MFC construction - Fitted with solid split doors	1	Carcass: White Egger® W980 with Hranipex® HU10980 White Pearl edging Fascias: White Cape Elm Egger® H3760 with matching edging	
4	BU1145600713-CORNER	Corner base unit - 1145W x 600D x 713H - 18mm MFC construction - Open fronted	1	White Cape Elm Egger® H3760 with matching edging	1no. fixed shelf
Room to be cleared prior to installation. Cabinets to be fitted on adjustable feet and a continuous plinth is to be scribed to fit on site. End panels to be supplied in oversized and cut to suit on site.					

Revision issue history		
Drawing issue:	Date:	Description of changes:
1	26-05-20	Drawing issued
2	08-07-21	Corrected no. 3 unit depth (was 250, actually 300) Added wall and BU drawing page
3	13-07-21	Added 100mm support wall

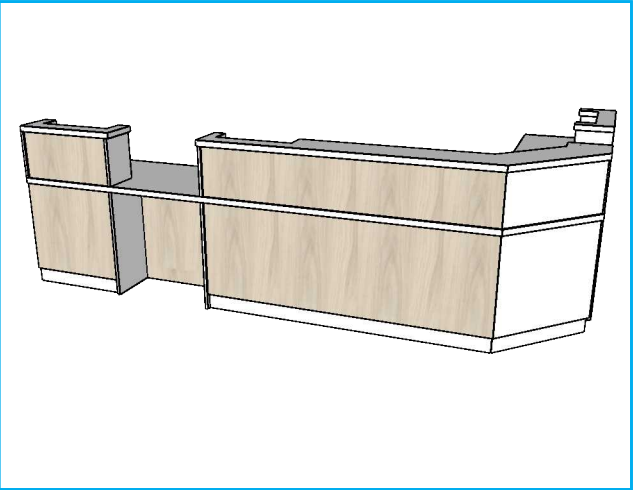
Elevation 1 (1:20)



Drawing / room name:		Drawing no:	Issue / version no:	Date:
Ward 1 Staff Base		MS06309	3	13-07-21
 <div>Medspace Solutions Ltd. Unit 38, Hither Green Industrial Estate, Clevedon, BS21 6XU 01275 394959 sales@medspacesolutions.co.uk</div>		Drawing author: Steve Caira steve.caira@medspacesolutions.co.uk	Contact:	
		Checked by: NOT CHECKED	Scale: 1:20 / 1:50 @ A3	Sheet no: 4 of 8

Revision issue history		
Drawing issue:	Date:	Description of changes:
1	26-05-20	Drawing issued
2	08-07-21	Corrected no. 3 unit depth (was 250, actually 300) Added wall and BU drawing page
3	13-07-21	Added 100mm support wall

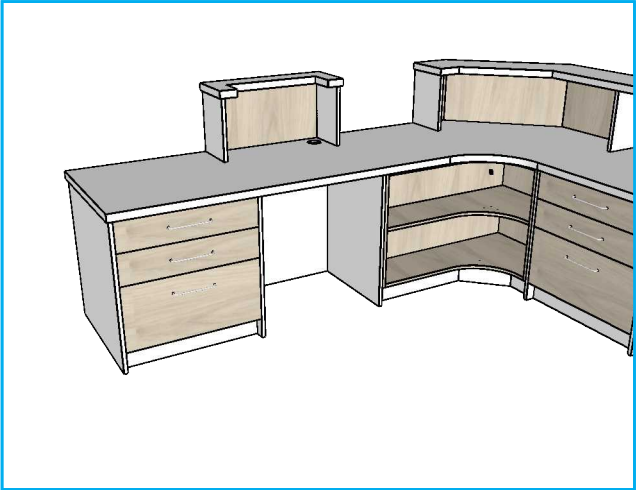
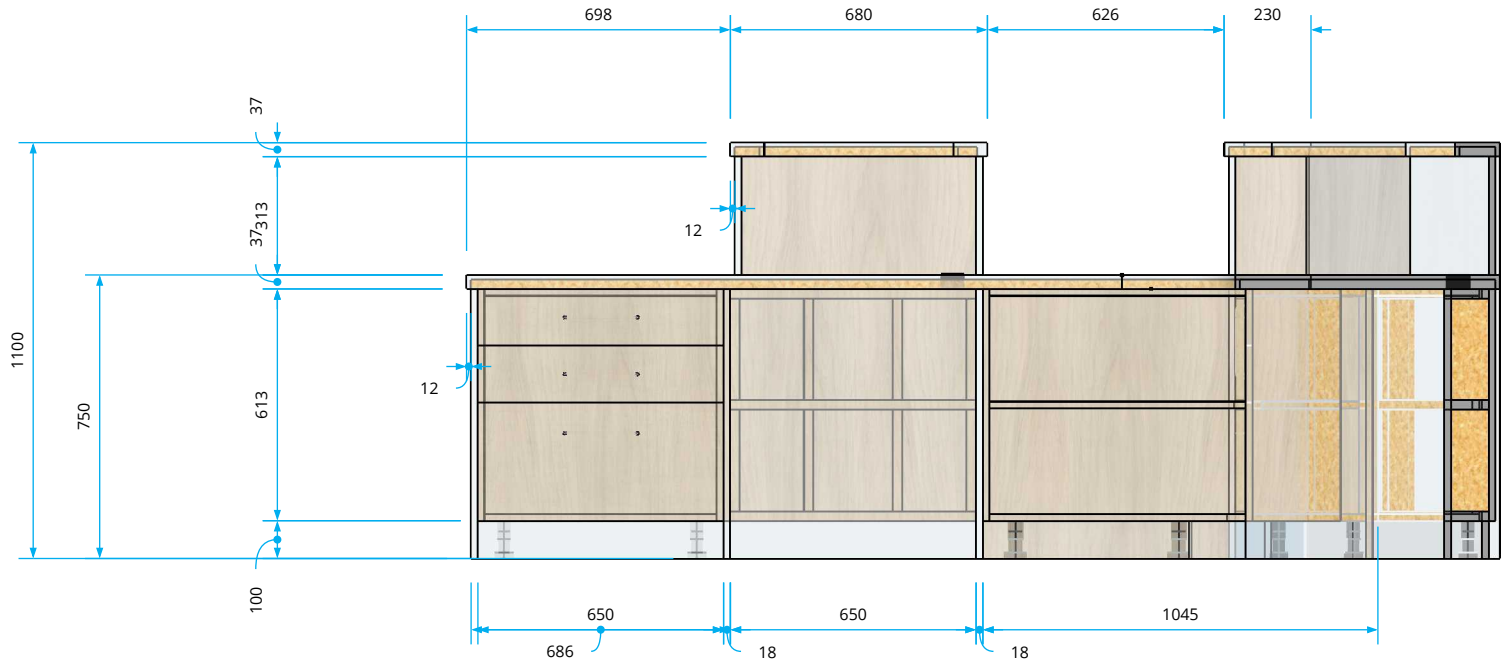
Elevation 2 (1:20)



Component list & specification					
Drawing reference:	Part number:	Description	Qty.	Colour requirements:	Notes:
1	STAFFBASE	Solid surface worktops with laminate fascias - 3650W x 2734W x 700D 750H worktop 1100H top box	1	Worktop: Group A solid surface 'White' Fascias: White Cape Elm Egger® H3760 with matching edging	
2	BU650600713-3D	Base unit - 650W x 600D x 713H - 18mm MFC construction - Fitted with 3 no. drawers	2	Carcass: White Egger® W980 with Hranipex® HU10980 White Pearl edging Fascias: White Cape Elm Egger® H3760 with matching edging	1 no. large drawer 2 no. small drawers
3	BU650300713-SD	Base unit - 650W x 300D x 713H - 18mm MFC construction - Fitted with solid split doors	1	Carcass: White Egger® W980 with Hranipex® HU10980 White Pearl edging Fascias: White Cape Elm Egger® H3760 with matching edging	
4	BU1145600713-CORNER	Corner base unit - 1145W x 600D x 713H - 18mm MFC construction - Open fronted	1	White Cape Elm Egger® H3760 with matching edging	1no. fixed shelf
Room to be cleared prior to installation. Cabinets to be fitted on adjustable feet and a continuous plinth is to be scribed to fit on site. End panels to be supplied in oversized and cut to suit on site.					

Revision issue history		
Drawing issue:	Date:	Description of changes:
1	26-05-20	Drawing issued
2	08-07-21	Corrected no. 3 unit depth (was 250, actually 300) Added wall and BU drawing page
3	13-07-21	Added 100mm support wall

Elevation 3 (1:20)

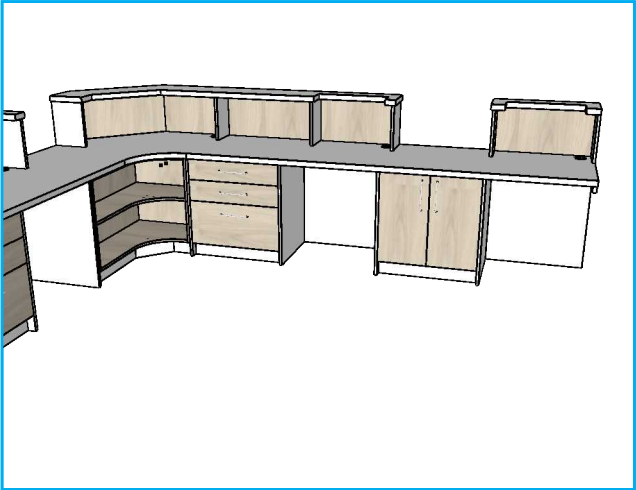
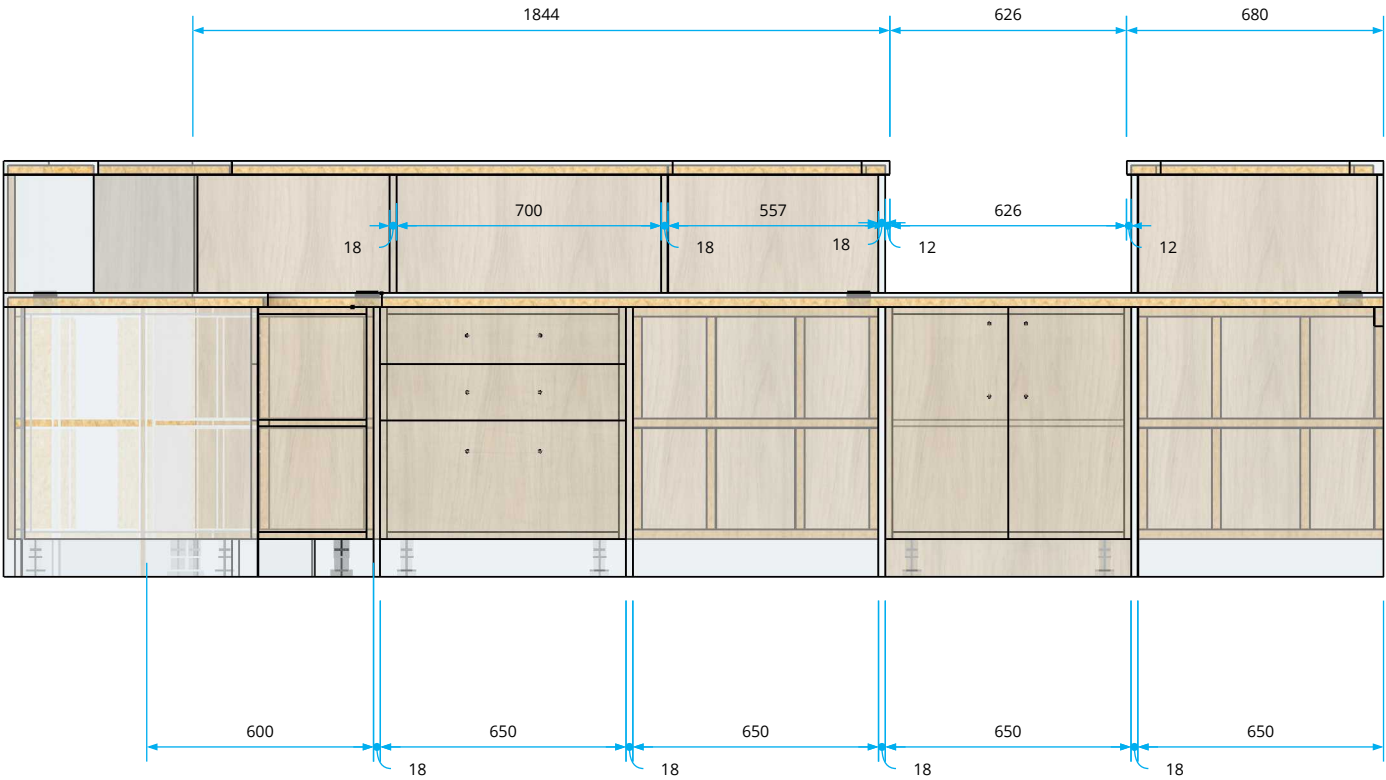


Drawing / room name:	Drawing no:	Issue / version no:	Date:
Ward 1 Staff Base	MS06309	3	13-07-21
Drawing author: Steve Caira steve.caira@medspacesolutions.co.uk		Contact:	
Checked by: NOT CHECKED		Scale: 1:20 / 1:50 @ A3	Sheet no: 6 of 8

Component list & specification					
Drawing reference:	Part number:	Description	Qty.	Colour requirements:	Notes:
1	STAFFBASE	Solid surface worktops with laminate fascias - 3650W x 2734W x 700D 750H worktop 1100H top box	1	Worktop: Group A solid surface 'White' Fascias: White Cape Elm Egger® H3760 with matching edging	
2	BU650600713-3D	Base unit - 650W x 600D x 713H - 18mm MFC construction - Fitted with 3 no. drawers	2	Carcass: White Egger® W980 with Hranipex® HU10980 White Pearl edging Fascias: White Cape Elm Egger® H3760 with matching edging	1 no. large drawer 2 no. small drawers
3	BU650300713-SD	Base unit - 650W x 300D x 713H - 18mm MFC construction - Fitted with solid split doors	1	Carcass: White Egger® W980 with Hranipex® HU10980 White Pearl edging Fascias: White Cape Elm Egger® H3760 with matching edging	
4	BU1145600713-CORNER	Corner base unit - 1145W x 600D x 713H - 18mm MFC construction - Open fronted	1	White Cape Elm Egger® H3760 with matching edging	1no. fixed shelf
Room to be cleared prior to installation. Cabinets to be fitted on adjustable feet and a continuous plinth is to be scribed to fit on site. End panels to be supplied in oversized and cut to suit on site.					

Revision issue history		
Drawing issue:	Date:	Description of changes:
1	26-05-20	Drawing issued
2	08-07-21	Corrected no. 3 unit depth (was 250, actually 300) Added wall and BU drawing page
3	13-07-21	Added 100mm support wall

Elevation 4 (1:20)



Drawing / room name:	Drawing no:	Issue / version no:	Date:
Ward 1 Staff Base	MS06309	3	13-07-21
Drawing author: Steve Caira steve.caira@medspacesolutions.co.uk		Contact:	
Checked by: NOT CHECKED		Scale: 1:20 / 1:50 @ A3	Sheet no: 7 of 8

Component list & specification						Revision issue history		
Drawing reference:	Part number:	Description	Qty.	Colour requirements:	Notes:	Drawing issue:	Date:	Description of changes:
1	STAFFBASE	Solid surface worktops with laminate fascias - 3650W x 2734W x 700D 750H worktop 1100H top box	1	Worktop: Group A solid surface 'White' Fascias: White Cape Elm Egger® H3760 with matching edging		1	26-05-20	Drawing issued
2	BU650600713-3D	Base unit - 650W x 600D x 713H - 18mm MFC construction - Fitted with 3 no. drawers	2	Carcass: White Egger® W980 with Hranipex® HU10980 White Pearl edging Fascias: White Cape Elm Egger® H3760 with matching edging	1 no. large drawer 2 no. small drawers	2	08-07-21	Corrected no. 3 unit depth (was 250, actually 300) Added wall and BU drawing page
3	BU650300713-SD	Base unit - 650W x 300D x 713H - 18mm MFC construction - Fitted with solid split doors	1	Carcass: White Egger® W980 with Hranipex® HU10980 White Pearl edging Fascias: White Cape Elm Egger® H3760 with matching edging		3	13-07-21	Added 100mm support wall
4	BU1145600713-CORNER	Corner base unit - 1145W x 600D x 713H - 18mm MFC construction - Open fronted	1	White Cape Elm Egger® H3760 with matching edging	1no. fixed shelf			
Room to be cleared prior to installation. Cabinets to be fitted on adjustable feet and a continuous plinth is to be scribed to fit on site. End panels to be supplied in oversized and cut to suit on site.								



Drawing / room name:	Drawing no:	Issue / version no:	Date:
Ward 1 Staff Base	MS06309	3	13-07-21
Drawing author: Steve Caira steve.caira@medspacesolutions.co.uk		Contact:	
Checked by: NOT CHECKED		Scale: 1:20 / 1:50 @ A3	Sheet no: 8 of 8