

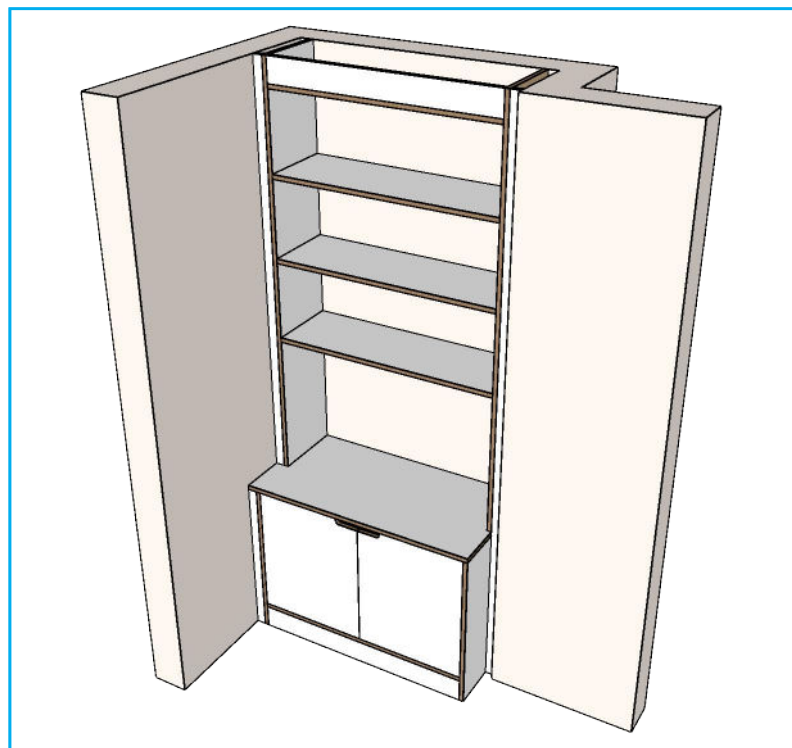
Component list & specification

Drawing reference:	Part number:	Description	Qty.	Colour requirements:	Notes:
1	CUSTBU	Custom base unit - 965W x 500D x 700H (mm) - 18mm melamine faced plywood - Split doors - With extended top panel 1045W	1	White faced ply	1 no. adjustable shelf Hole for plug access in LH side panel approx. 160W x 100H (mm)
2	CUSTSHEL	Custom shelving unit - 965W x 300D x 1705H (mm) - 18mm melamine faced plywood	1	White faced ply	3 no. shelf Bulkhead to ceiling
3	INFILL	Infill panel - 40W x 2405H (mm) - 18mm melamine faced plywood	1	White faced ply	
4	INFILL	Infill panel - 40W x 1705H (mm) - 18mm melamine faced plywood	1	White faced ply	
5	INFILL	Infill panel - 40W x 700H (mm) - 18mm melamine faced plywood	1	White faced ply	

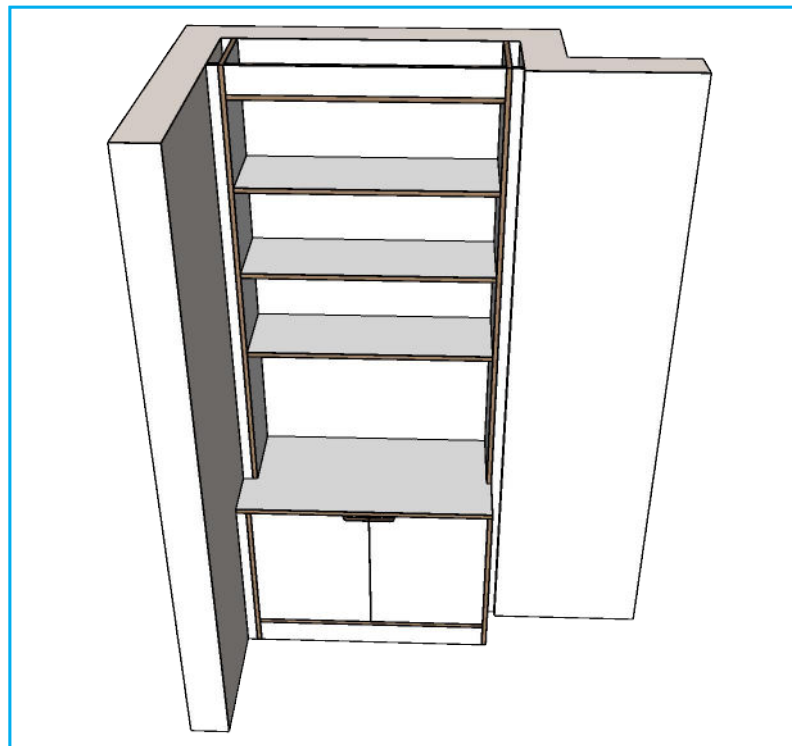
Room to be cleared prior to installation.
Cabinets to be fitted on adjustable feet and a continuous plinth is to be scribed to fit on site

Revision issue history

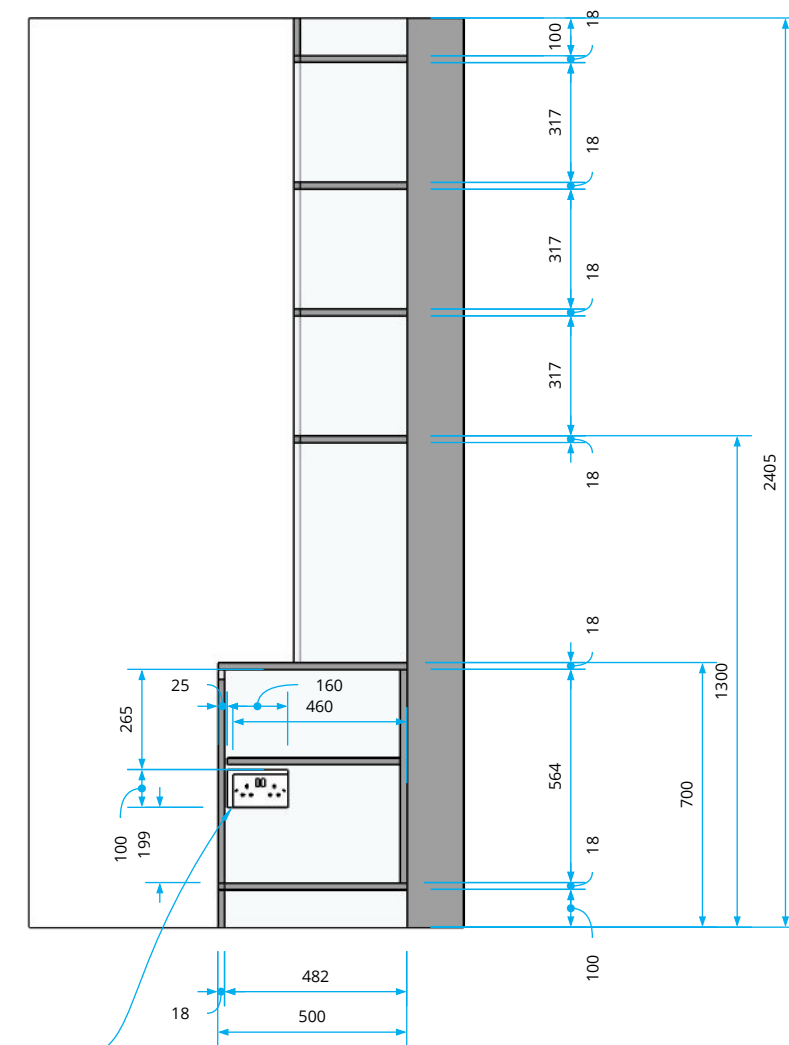
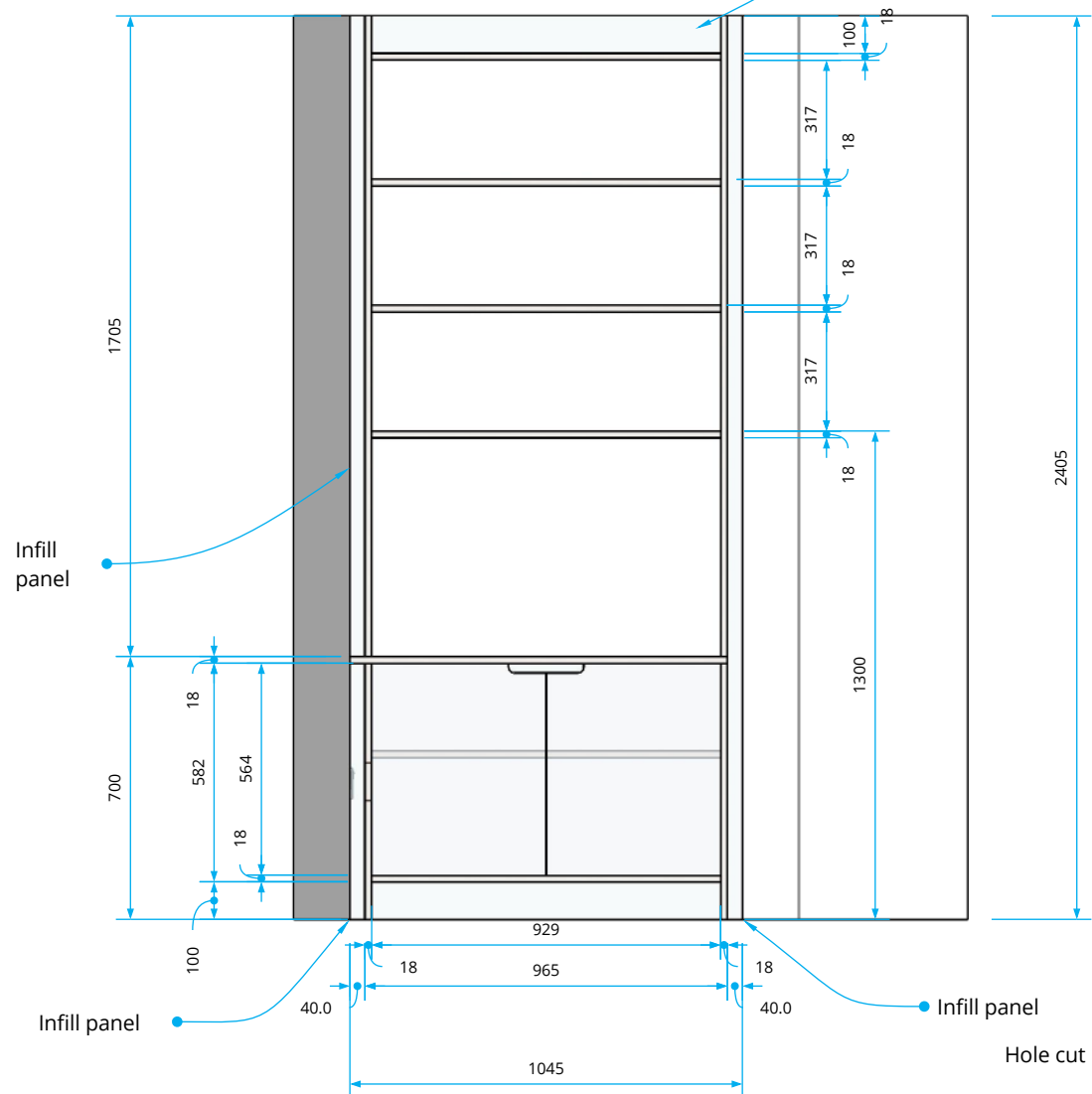
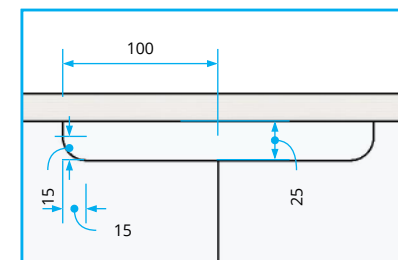
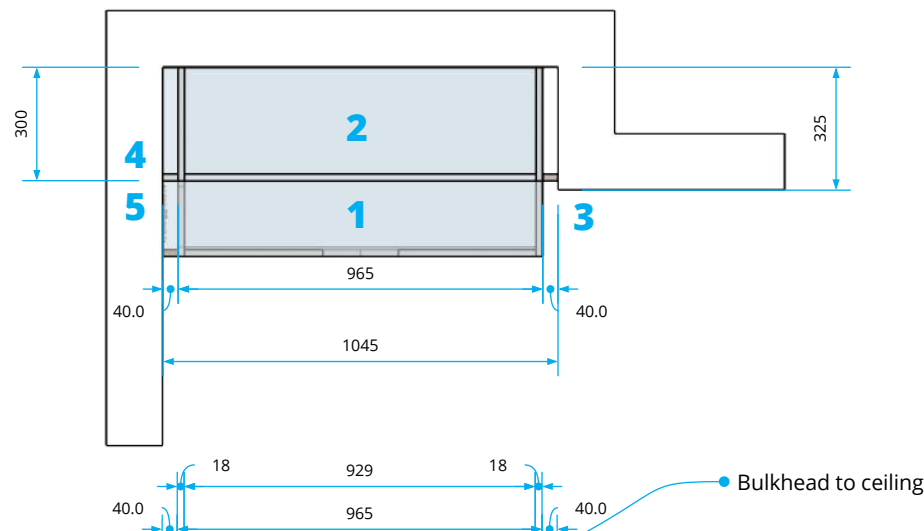
Drawing issue:	Date:	Description of changes:
1	09-03-20	Drawing issued
2	11-03-20	Changed shelving unit width from 1000W to 965W. Changed shelving unit height from 1505H to 1705H. Changed BU width from 1000W to 965. Changed BU height from 900 to 700. Changed infills from 22.5W to 40W. Added 100H bulkhead
3	13-03-20	Increased depth of BU from 300D to 500D. Extended worktop between walls. Split LH infill to accommodate new depth. Added hole access to LH panel. Changed shelf arrangement



3D view 1



3D view 2



Drawing / room name:

Lounge Alcove 1

Drawing no:

AF001

Issue / version no:

3

Date:

13-03-20



Medspace Solutions Ltd.
Unit 38, Hither Green Industrial Estate,
Clevedon, BS21 6XU
01275 394959
sales@medspacesolutions.co.uk

Drawing author:

Steve Caira
steve.caira@medspacesolutions.co.uk

Checked by:

NOT CHECKED

Contact:

Scale:

1:20 / 1:5 @ A3

Sheet no:

1 of 2

Component list & specification

Drawing reference:	Part number:	Description	Qty.	Colour requirements:	Notes:
1	CUSTBU	Custom base unit - 965W x 500D x 700H (mm) - 18mm melamine faced plywood - Split doors - With extended top panel 1045W	1	White faced ply	1 no. adjustable shelf Hole for plug access in LH side panel approx. 160W x 100H (mm)
2	CUSTSHEL	Custom shelving unit - 965W x 300D x 1705H (mm) - 18mm melamine faced plywood	1	White faced ply	3 no. shelf Bulkhead to ceiling
3	INFILL	Infill panel - 40W x 2405H (mm) - 18mm melamine faced plywood	1	White faced ply	
4	INFILL	Infill panel - 40W x 1705H (mm) - 18mm melamine faced plywood	1	White faced ply	
5	INFILL	Infill panel - 40W x 700H (mm) - 18mm melamine faced plywood	1	White faced ply	

Room to be cleared prior to installation.

Cabinets to be fitted on adjustable feet and a continuous plinth is to be scribed to fit on site

Revision issue history

Drawing issue:	Date:	Description of changes:
1	09-03-20	Drawing issued
2	11-03-20	Changed shelving unit width from 1000W to 965W. Changed shelving unit height from 1505H to 1705H. Changed BU width from 1000W to 965. Changed BU height from 900 to 700. Changed infills from 22.5W to 40W. Added 100H bulkhead
3	13-03-20	Increased depth of BU from 300D to 500D. Extended worktop between walls. Split LH infill to accommodate new depth. Added hole access to LH panel. Changed shelf arrangement



Drawing / room name:

Lounge Alcove 1

Drawing no:

AF001

Issue / version no:

3

Date:

13-03-20



Medspace Solutions Ltd.
Unit 38, Hither Green Industrial Estate,
Clevedon, BS21 6XU
01275 394959
sales@medspacesolutions.co.uk

Drawing author:

Steve Caira
steve.caira@medspacesolutions.co.uk

Checked by:

NOT CHECKED

Contact:

Scale:

1:20 / 1:5 @ A3

Sheet no:

2 of 2